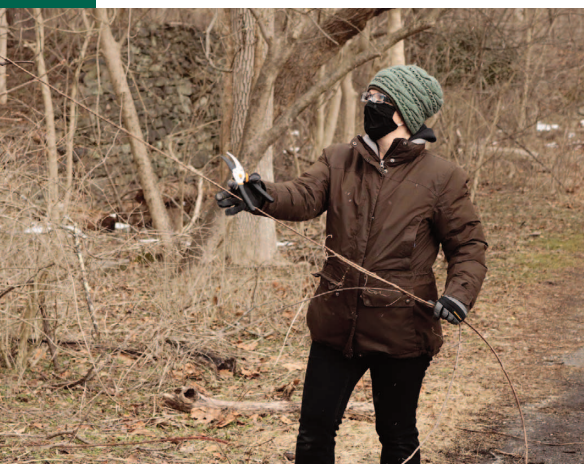




PENNYPACK ECOLOGICAL RESTORATION TRUST

2021 ANNUAL REPORT







PRESIDENT'S LETTER

Dear Members,

THE ENERGY AROUND THE TRUST THIS YEAR IS REMARKABLE.

Not only has the staff been busy, but the number of volunteers, particularly regular volunteers, is a testament to the care and enthusiasm that so many have put into motion all across our forests, streams, and visitor center. The energy is infectious, and extends to your Board of Directors as well. The membership committee is pushing membership to an all-time high and the marketing committee is spearheading a capital campaign and launching a host of events to finally celebrate our 50th anniversary. Meanwhile, the staff and the Robertson Interns are to be commended for broadening our educational offerings and doing so exclusively out-of-doors, in all weather, opening new ways to help our visitors make their own relationship with nature.

Here is where I'm most impressed: the fusion of volunteers, board members, and staff working together to establish new traditions at the Trust (despite the pandemic's continued curveballs).

Our 3rd annual 5K trail run and our fall hayride gave families a beautiful experience of the Trust and thoroughly demonstrated the cooperation of people who care about the Trust and about the environment.

We need to find a better way to house and host that energy. As someone who cares deeply about seeing the Trust continue to be valued and vibrant, I'm particularly excited to see us reinvest in the educational experience of the Trust. The Capital Campaign currently underway is quite simply a necessity to make sure that our facilities, our trails, our story convey how much we care about this place and your experience of it. We simply must act now to modernize our trails, add indoor and outdoor classrooms, and showcase how centuries-old buildings can be made carbon neutral.

It's clear to me that we've come through this COVID crisis with renewed understanding of what's important. Two years ago, the most common refrain heard from visitors was "I never knew this was here"; and that's largely changed to "I don't know what I'd do without this place." Thank you so much for being a part of this transformation! 🍀

Sincerely Yours,

A handwritten signature in blue ink, appearing to read "Gilbert P. High, Jr.". The signature is fluid and cursive, with a large, stylized "G" and "H".

Gilbert P. High, Jr.



His leadership was focused on achieving common goals towards creating a healthy environment.

Feo in his element in the Pennypack Creek

Photo by: Ingrid Herder

REMEMBERING FEODOR PITCAIRN

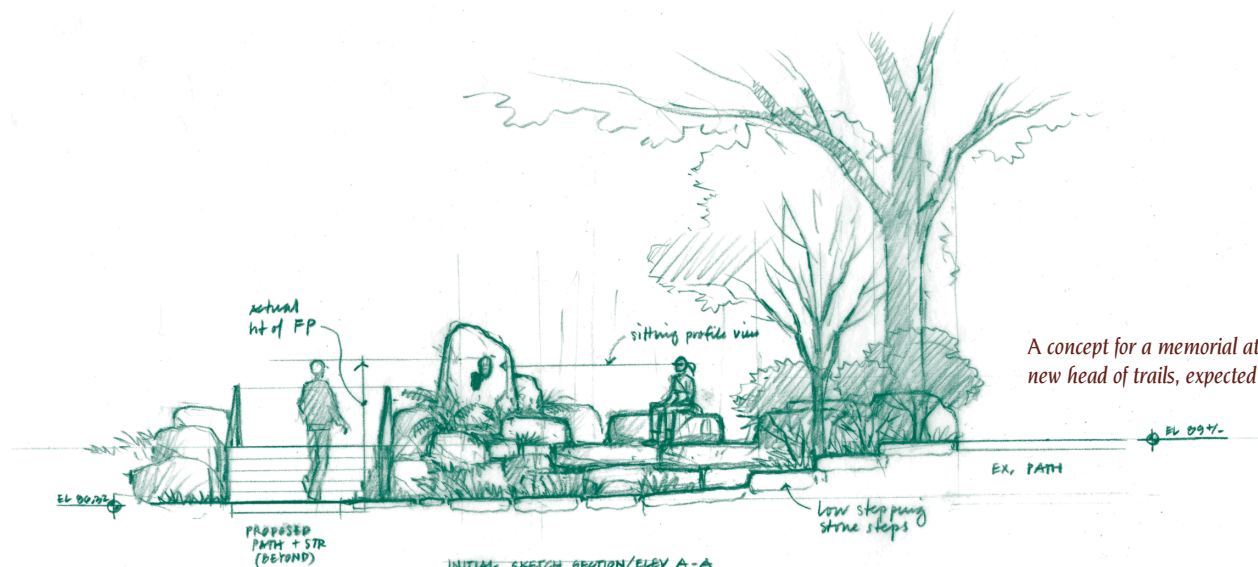
By Chris Mendel with David Robertson

The Pennypack Trust's founder, Feodor Pitcairn, died on May 13th at the age of 86. I am honored to have shared time, albeit short, with Feo. As only the third executive director of the Pennypack Trust and its predecessor, the Pennypack Watershed Association, I could always count on Feo to be able and willing to share details about the five decades of the organizations' history that occurred before I took the helm. This remembrance of him is significantly aided by the skillful writing and deeper experiences of Feo's and my good friend, Dr. David Robertson.

Feo was an inspirational yet quiet leader; he excelled at finding good partners

to bring onto the Watershed Association's board. He recruited leaders that included concerned citizens, bankers, real estate brokers, landscape architects, biologists, and educators. Most importantly, he imbued board members with the organization's vision, giving everyone a common purpose while allowing them to be themselves and letting their expertise guide the organization's growth. His leadership was focused on achieving common goals towards creating a healthy environment. He was remarkably self-effacing regarding the decades of hard work it took to build eastern Montgomery County's largest private land trust. As a connoisseur of puns, he was apt to say, "Founders tend to flounder," and so he was happy to pass the mantle of leadership to others in the early 1990s.

Feo was an impassioned citizen. He and the Watershed Association made townships responsible for their landfills.



A concept for a memorial at the proposed new head of trails, expected in 2023

He challenged developers and local governments to keep their promises regarding open space. He pushed the Pennsylvania Department of Environmental Protection to think differently about water quality. But Feo also believed in service to his community; after stepping away from the Pennypack Trust, he led Montgomery County's Planning Commission, guiding the county and region towards environmentally responsible development and transportation planning.

Feo was a visionary, and for his foresight a half-century ago we are blessed to enjoy the 850-acre Pennypack Preserve today. He recognized the creeping effects of suburban sprawl in southeastern Pennsylvania following World War II and took advantage of his extended family's resources and landholdings to propose a natural area that would protect the shrinking forests and wetlands in the central Pennypack Creek watershed and link to similarly protected natural areas downstream in Montgomery County's Lorimer Park and Philadelphia's Pennypack Park. Watching anglers cast their lines into billowing suds at Creek and Huntingdon roads in the late 1960s may have been just the catalyst he needed to take action.

He was always looking to make subtle challenges to the status quo, always looking ahead. While his concepts were regional and global in scope, his ideas for implementation were firmly grounded here at home: "How can we reduce light

pollution in Lower Moreland Township?" "What would it take to get anglers to leave some portion of the fish in Pennypack Creek for wildlife?"

Unfortunately, one of Feo's original goals for the Pennypack Watershed Association remains as elusive as ever. He (and others of the first Earth Day generation) sought to make geography and environment intrinsic to local politics by designating watersheds a unit of government. Our allegiances would be based on geography and on water quality, thereby focusing on our common environmental responsibility to ourselves and to one another. By "redistricting" municipalities along watershed boundaries, we might finally be accountable to one another both upstream and down. Think of the economic and cultural diversity that would include Horsham, Huntingdon Valley, Willow Grove, Bryn Athyn, Rockledge, and Northeast Philadelphia.

It was rare to see Feo outdoors without a camera, either a still camera or a video camera. Early in his career, he produced a series of stunning underwater images from the world's oceans using mostly natural light, the best of which he collected into several books. He then turned to underwater videography, amassing a collection of high-definition videotapes that literally filled a garage. Back on land in the Pennypack, Feo

documented the preserve's woodlands, meadows, streams and wetlands in his book *Dreaming Wild in the Heart of the Pennypack*, and in a second, privately published, limited edition collection of photographs. Feo's beautiful and inspiring images gathered from the Pennypack and his trips around the world grace the hallways of Jefferson Abington Hospital and the hospital's Asplundh Cancer Pavilion in Willow Grove. His final photographic project resulted in a book of spectacular images from Iceland.

Feo's humor and humility helped set in motion a local tidal wave for conservation that will persist for generations

and will continue to expand beyond the current 850 acres protected in the Pennypack Preserve. Most importantly, the Trust will carry out his mission of remaining forever natural, forever native, and forever advancing the practice of ecological restoration.

Finally, I think Feo would prefer that he is not remembered as the sole originator of the Pennypack Watershed Association, he was part of a founding team in 1970-71 that should not be forgotten. They are Barr Asplundh, Duane Clark, Fred Drews, Robert Freer, Grant R. Doering, Ray Synnestvedt, Owen Freeman, Bruce Henderson, Kirk Pendleton, C. Brewster Rhoads, Jr., William Greenhouse, Jr., and David B. Witwer. Rudy Guenzel and Natalie Gribbel joined the founding team in 1971. 🌿

CHARTING A SUSTAINABLE AND EDUCATION FOCUSED FUTURE FOR THE PENNYPACK TRUST

By Chris Mendel, Executive Director

Looking towards our next fifty years, we urgently need to deliver a robust conservation-focused message throughout the preserve and prepare our facilities for the educational needs of future generations. To do this, we've launched "A Watershed Moment Capital Campaign" to better tell our 50-year story of ecological restoration. This story includes how we are refreshing Trust facilities and how we are helping all our visitors form their own unique relationship with nature. We want our buildings and landscapes to be a hub for environmental education, open to schools, universities, and clubs. Reinvestment throughout the Trust will ensure that we



offer engaging, universally accessible, and in-depth educational experiences. Every project is a pairing of interior and exterior site renovations because we want to keep our focus on nature and the outdoors. We will model carbon-neutral and regenerative energy systems by doing away with fossil fuels and installing geothermal heating and cooling in all our buildings. Photovoltaic solar panels will further add renewable energy back to the grid. Key to our sustainable renovations is preserving and investing in our historic buildings; valuing the past, not demolishing it.

Key to our sustainable renovations is preserving and investing in our historic buildings; valuing the past, not demolishing it.

This will be a four-year effort that will touch every gateway in the Pennypack Trust, updating our signs and improving nature literacy along our trails. Our goal is to raise \$2 million to enable these and other construction efforts. We've raised \$1.25 million so far but we've still got a long way to go. Please help us by making a one-time pledge or by making a pledge over four annual installments. 🌱

You can make your pledge on-line at:

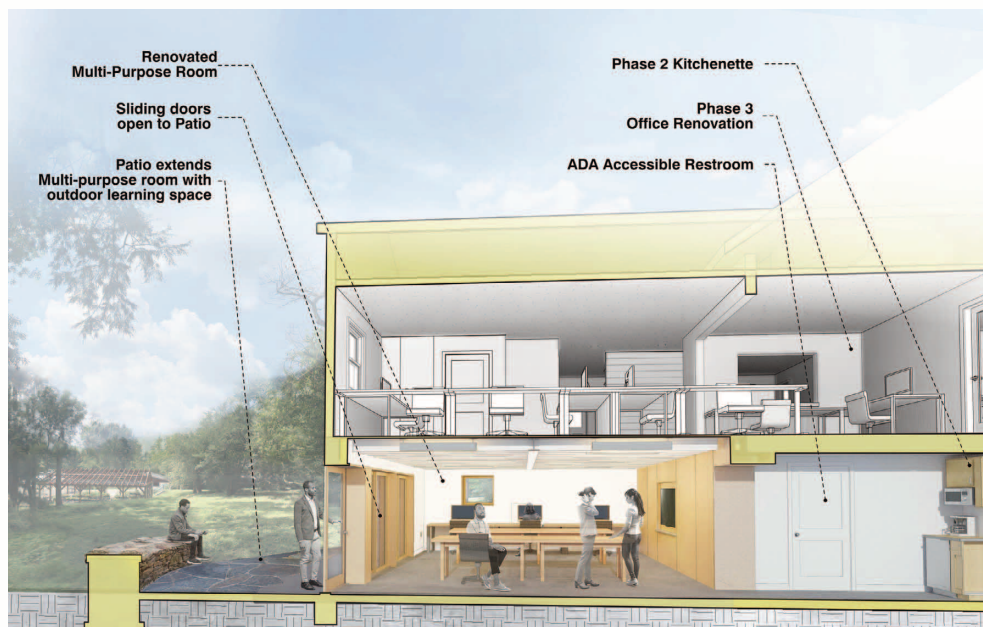
<https://pennypacktrust.org/annual-fund/>

Thank you so much for your support!



Head of trails, solar PV array, and accessible learning garden

Multifunction learning and research space





New wayfinding and signage



Christmas trees trap sediment when they are laid into swales with their tops pointing up-stream.

TOWNSHIP AND LAND TRUST RECYCLE CHRISTMAS TREES

By Chris Mendel, Executive Director

Upper Moreland Township and the Pennypack Ecological Restoration Trust are working together to keep the Pennypack Creek healthy and reduce waste. We're doing it with the Christmas trees you've set to the curb. The Township's Public Works Director, Dave Elsier, and Sanitation Foreman, Don Messler, are long-time friends of Pennypack Trust. With their help, over 700 trees (about 10% of all those collected) went to the Trust in January 2021. Trust employees and volunteers staked them into small swales and drainages that lead to the Pennypack Creek. The trees trap sediment which is the main pollutant of the Pennypack Creek. The trees also impound water in little pools scattered in the forests that are critical to the life cycles of both insects and amphibians. These critters drive the food chain for fox, fish, hawks, snakes, and so many other animals.

Letting hundreds of Christmas trees biodegrade in nature reduces handling time and is a fantastic example of waste stream diversion. This saves the Township time from having to further grind up and fold in that waste stream with other compostable materials.

How can you make your Christmas tree useful to our watershed next year? Here's what you can do:

- Please don't bring your tree directly to the Trust, just take it to the curb in the first full week of January.
- Do not use tinsel! Or please remove it if you do, because it's very persistent and litters the landscape.
- Sometimes leaf bags are also part of a load of Christmas trees; be sure that dog waste is not part of the mix.

Thank you, Upper Moreland Township and residents!
All it takes is communication and cooperation! 🌿

VOLUNTEER IMPACT

2,500+ HOURS



23 STREAM SITES MONITORED



50 FOREST PLOTS ADOPTED



8 FREE A TREE CORPS EVENTS



500+ VOLUNTEERS



VOLUNTEERS REVOLUTIONIZE THE TRUST!

By Lara Thrapp, Membership and Communications Coordinator

Volunteers are the reason we can do what we do. Offering whatever time they can, volunteers help with everything from planting trees, trail restoration, event staffing, mailing assistance, and so much more. Always dressed in a smile and eager to lend a hand, they inspire our community daily. This year was an incredible year for volunteer hours, collectively logging more than 2,500 hours. On the opposite page, you will learn a little bit more about why our volunteers volunteer.

**SIMPLY PUT,
VOLUNTEERS ARE THE
HEART OF THE
PENNYPACK TRUST.**

Kevin Roth is the Trust's Volunteer Coordinator. His goal is to place volunteers in roles that empower them. Volunteering is an opportunity to not only achieve a more meaningful relationship with the natural world, but to also be part of the Trust's mission. Roth says, "when volunteers are given the tools they need to be successful, everyone wins. The Trust is able to make a greater impact and volunteers develop rewarding skills and become part of a dedicated community."



Will Schenk – I live in Huntingdon Valley, and I am a current Junior at Temple University studying Applied Mathematics to pursue a career that uses equations and data to find solutions to problems in environmental sustainability. I enjoy hiking in the Pennypack, rock climbing, and learning about the outdoors. During the pandemic, I was searching for ways to get involved, and in noticing the issue of trees getting strangled out by invasive vines, I decided to pick up shears and help as a reforester.

I started last winter, and every weekend I went to a fence-enclosed region of the preserve, put on a podcast, and worked at cutting invasives and uncovering trees.

I love the experience, especially during the cooler months, of going out and freeing tons of trees on the verge of dying. Releasing each tree from vines is a difficult but a rewarding challenge. A challenge can be relaxing as well as rewarding. You learn a lot about understory and canopy trees and come across interesting things like buried artifacts, praying mantis eggs, cocoons, birds, and other animal species. Plus, it's a great workout!



Elaine – My introduction to the Trust was as a barnsitter (Visitor Center attendant) many years ago. After my barnsitting shift I would often walk around the surrounding trails, exploring and enjoying nature. I decided I wanted to spend more time at the Trust and eventually I began volunteering at some of the events and took on the role of Barnsitter Coordinator. We have a very dedicated group of barnsitters that I thoroughly enjoy working with. For me the time I spend at the Preserve is peaceful, relaxing, and always something I look forward to.

Mark – I found the Trust through the native plant classes held in the Visitors Center many years ago. On my days off from work I would wander through the Trust, discovering the fauna and flora. Upon retiring, I began to volunteer with the greenhouse gang that met on Friday mornings. Soon after, I repaired and built gates around the Preserve. Wanting to do more, I volunteered to mow and maintain the grounds of the Trust. There is nothing more enjoyable to me than to be out in the Trust communing with nature. The beauty and the solitude calm the soul. I look forward to many more years of volunteering. 🌿





TODAY'S TECHNICAL CHALLENGE: HURRICANE IDA

By Chris Mendel

As this goes to publication, our staff are installing a new form of trail reinforcement along Creek Road. In the winters of 2019 and 2020, we experimented with geocells, which are perforated sheets that when pulled apart like an accordion, create 6" pockets to be filled with stone and gravel. Think of it like a framework for a typical gravel path. Geocells unify gravel into a strong 6" thick, 27' long mattress. This perforated mesh holds the stone to allow water to flow through and over it, and prevents gravel from migrating into the creek.



We used Geocells experimentally on the steep slopes of Paper Mill Road, the deeply rutted segments of Mason's Mill Trail near the Lord's New Church and Creek Road Bridge, and over a culvert that allows Mitchell Run to pass under Creek Road Trail. Tinkering with the size and compaction of various gravel mixes, we watched; as large and small storms took their shots. We took our lumps and learned. It seems the timing was good that we arrived at a durable and easy-to-install solution less than a year before the storm.

Hurricane Ida brought torrential rain with an intensity rarely seen. The storm shoved massive quantities of water through an 80' wide weir formed between the hardened embankments of the old rail bed on one side, and the retaining walls of former mill structures on the other. The result was a deep column of water moving at great speed that lifted boulders and uprooted trees. The floodplain gradually widens farther downstream. At 200' wide, it deposited cobbles and other small stones; at 800' wide, it glided over the entirety of Crossroads Marsh, depositing sands, gravel, and

Geocells on Creek Road Trail being backfilled with ballast. This trail construction technique makes for a stronger, more storm resistant trail.

"plates" of old asphalt uplifted from the former Creek Road. The hurricane had disassembled and sorted road-building materials over 1.1 miles downstream of Huntingdon Road!

We are tremendously grateful for two contractors in Scott Schetter and Jim Long who acted quickly, pouncing on the opportunity to re-mix, redistribute, and compact these materials into a new trail bed. They literally laid the groundwork for our staff to implement our tested Geocell recipe.

The Trust appreciates your patience while we deal with material shortages and delivery delays that keep our repairs moving slowly. But I look forward to a better multipurpose trail surface that is also resilient in the face of the intense storms that are being brought on by climate change. 🌿



MEET THE INTERNS OF 2021



THE ROBERTSON
ENDOWMENT
FOR EDUCATION



Megan Michelli



Jake Winger



Julia Murray



Bennet Durrand



Sarah Pellecchia

MEGAN MICHELLI

A horticultural student at Temple University, Megan's path to the Trust started with her passion for plants. In 2019 she enrolled in the Penn State Extension Master Gardener program where she found her calling and thus pivoted her career. Megan first visited PERT on a field trip with her Plant Ecology class. Learning about the importance of native plants to the local wildlife, habitats and ecosystems at PERT made her want to get more involved. During her internship, she deepened her knowledge of theory and application within her local ecosystem.

JAKE WINGER

Jake received his bachelor's degree in geology at West Chester University where he is also working on his master's degree in geography, focusing on conservation, sustainability, and GIS. At the Trust, Jake worked on invasive plant control and various land management practices. He also used his GIS skills to help the

Trust track current land management goals and to help plan future projects.

JULIA MURRAY

Julia is a recent graduate from the Wildlife and Fisheries Science major at Penn State. From an early age, the natural world enthralled her. She would spend hours watching the birds feed outside her window, learning all their names and stories, and sharing them with anyone who would listen. As an intern at the Trust, she found that her favorite thing was thinking of ways to help others feel connected to the beauty around them. During her time at the Trust, Julia penned an article for PERT's website that challenged common misconceptions about conservation.

BENNET DURRAND

Bennet grew up around the Pennypack. He found it especially rewarding to work in restoration and see the positive impact he could make on an ecosystem. Bennet was typically found working in the wet-beds and in the greenhouse,

growing different plants from seed, cuttings, and transplants. He never expected that working in the Pennypack would give him a whole new love and appreciation for the area he grew up in, but he's grateful it did.

SARAH PELLECCCHIA

Sarah joined the PERT team when her Peace Corps assignment in Senegal was put on hold due to the pandemic. Sarah graduated with her master's degree in entomology from the University of Kentucky. She delights in the natural world and the relationships between insects and plants. At the Trust, Sarah has been studying the insects occupying grasslands and the importance of allowing lawns to grow. We have been grateful to have Sarah for an extended stay until she is called to her Peace Corps assignment.

Thanks to the generous donors of the Robertson Endowment and the folks at BLBB Charitable, the Pennypack Trust can offer the opportunity to kickstart careers in conservation. This is the third year running that the Trust has had a class of interns. Every individual arrives with a diverse set of skills to which we cater their experience. We've found that our interns not only bring new energy to the Trust's staff and projects, but also leave with a clearer vision of what they'd like their careers to look like. This year, our intern class took on everything from grant writing and GIS mapping, to grassland research, and so much more. We hope their time at the Trust has inspired them to continue to protect the natural world in their own unique way. Thanks to BLBB Charitable for their three year \$60K support. 🌿



CHARITABLE

THE GIVING ARM
OF BLB&B ADVISORS



■

*As the last remnants of agriculture become the
next residential developments, the need for natural land
that conserves native species and protects ecological integrity
becomes ever more precious.*

■

CONSERVATION EASEMENTS: LEAVING A LEGACY OF LAND CONSERVATION

By Maria Paula Mugnani, Research and Restoration Coordinator

As the last remnants of agriculture become the next residential developments, the need for natural land that conserves native species and protects ecological integrity becomes ever more precious. Conservation easements are unique tools for protecting open space, and they protect a private owner's real estate value, without giving up the landowner's control.

A conservation easement:

- permanently prohibits development within certain portions of or the entirety of a parcel, depending on how it's written
- keeps conserved land under private ownership and the owner can retain many private property rights
- doesn't require public access (unless purchased using State funds and with the consent of the owner)

Together, the landowner and the easement holder (commonly a land trust like the Pennypack Trust) stipulate the activities allowed on the parcel. Properties vary in size from a few to hundreds of acres, effectively allowing a homeowner to turn their backyard into an ecological preserve. In pledging parcels for conservation, landowners can receive tax breaks and protect natural land from subdivision and development. While the typical Land Trust – Owner relationship includes an annual visit by the holder to view the condition of the property, the Pennypack Trust's role has evolved to be that of a conservation partner who can offer its expertise to make habitat management recommendations and give support if the landowner is interested in restoration.

For many of our supporters, this may be the first time they have heard of a conservation easement. Or indeed, it may be surprising to learn that easements comprise 125 of the Preserve's 852 acres. Whether through budgeted purchases or land donations from private landowners, conservation



THE TRUST'S 2020 ANNUAL FUND HELPED TO PURCHASE AND PLANT OVER 400 TREES ON THREE EASEMENTS

easements are a critical element to the connected network of landscapes that the Trust has been orchestrating for the past 50 years. Conservation easements help us strengthen habitat connectivity, linking areas to allow wildlife and plants to



Jack and Doris DeLong | Six acres protected in 2020

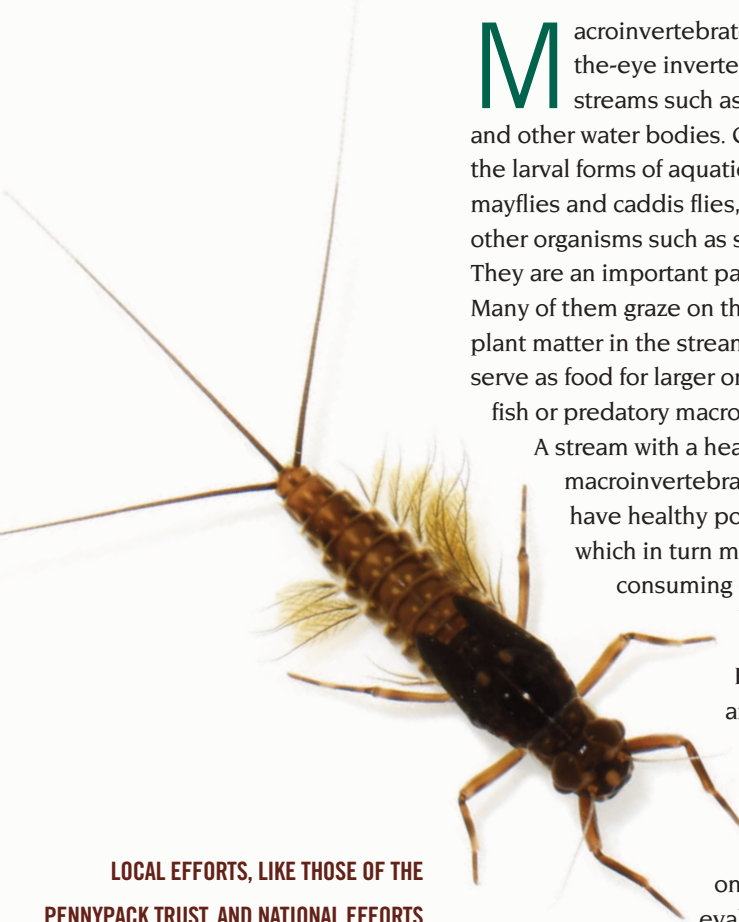
disperse through the landscape with less human disturbance. Conservation easements can be one of the most cost-effective ways of fighting against habitat loss and degradation, which is a major contributor to species population decline. In effect, conservation easements help us to de-fragment habitats and allow guided natural regeneration to heal the landscape for native plants and animals. As such, the Pennypack Trust is selective about which parcels they will help owners ease.

If you're outside of the region the Trust protects, we would be happy to refer you to a regional land trust that might partner with you.

For the 2020 Annual Fund, the Pennypack Trust asked the community to donate to help landowners with conservation easements restore several of their conserved areas. Thanks to your generous donations, the easements restored this year included a forested slope along Creek Road and a riparian zone along a major tributary of the Pennypack Creek. With the help of dedicated groups of volunteers removing invasive vines during many of the Trust's Free-a-Tree events, staff were able to clear the slope and host an Earth Day tree planting event. Over 120 trees were planted on that slope and another 200 more were planted on the riparian area in October. The Trust intends to support management of these sites as extensions of the preserve and welcomes others to reconnect their property back into the natural landscape. If there is one important investment to be made in our region – whether it is monetary or through volunteer time – it is to support protecting land forever for future generations to enjoy. 🌿

MACROINVERTEBRATES AND WATER QUALITY IN PENNYPACK CREEK

By Dr. Peter Gkonos



Macroinvertebrates are the visible-to-the-eye invertebrates living in streams such as Pennypack Creek and other water bodies. Commonly, they are the larval forms of aquatic insects such as mayflies and caddis flies, but may also include other organisms such as snails and crayfish. They are an important part of the ecosystem. Many of them graze on the algae and decaying plant matter in the stream. In turn, they serve as food for larger organisms such as fish or predatory macroinvertebrates.

A stream with a healthy population of macroinvertebrates is more likely to have healthy populations of fish, which in turn may support fish-consuming organisms such as birds and mammals.

However, there is another important reason to study macroinvertebrates in our streams.

It turns out that one of the best ways to evaluate water quality is

to look at what is able to live in the stream. A USGS study from 2005 showed that increasing urbanization of stream habitat was consistently associated with a decrease in macroinvertebrate diversity in multiple urban streams across the United States. The reasons for this likely vary from location to location and probably are due to a variety of factors, but assessing macroinvertebrate diversity can give an overall picture of the water quality of a stream.

As part of the Delaware River Watershed Initiative's Stream Keeper program, Pennypack Trust staff and volunteers have been monitoring macroinvertebrates in Pennypack Creek since 2016. We have found that at least one species of mayfly nymph, *Stenacron interpunctatum*, is commonly found throughout the Creek within the preserve. In addition, the larvae of more than one species of net-spinning caddis flies (family Hydropsychidae) and at least one species of finger-net caddis (family Philopotamidae) are present. These species are all somewhat pollution-tolerant and do not necessarily denote high water quality. But their presence may infer an improvement to water quality from just a few decades ago. In 1989 Dr. David Robertson, former director of the Pennypack Trust, surveyed the macroinvertebrates in Pennypack Creek. At that time, he found few or no mayfly or caddis species in the mainstem of the creek, perhaps because the upstream wastewater treatment plant lacked sufficient capacity to handle all the sewage from the area it served, leading to periodic overflows of pollution. Shortly after Dr. Robertson's survey, the treatment plant's capacity was increased, and a nitrogen-removal system was added. It is not unreasonable to speculate that the increase in mayfly and caddis species we now observe in the creek demonstrates an improvement of water quality because of those upgrades to the treatment plant.

LOCAL EFFORTS, LIKE THOSE OF THE PENNYPACK TRUST, AND NATIONAL EFFORTS TO IMPROVE WATER QUALITY, SUCH AS THE CLEAN WATER ACT, CAN MAKE A DIFFERENCE IN THE HEALTH OF OUR STREAMS.

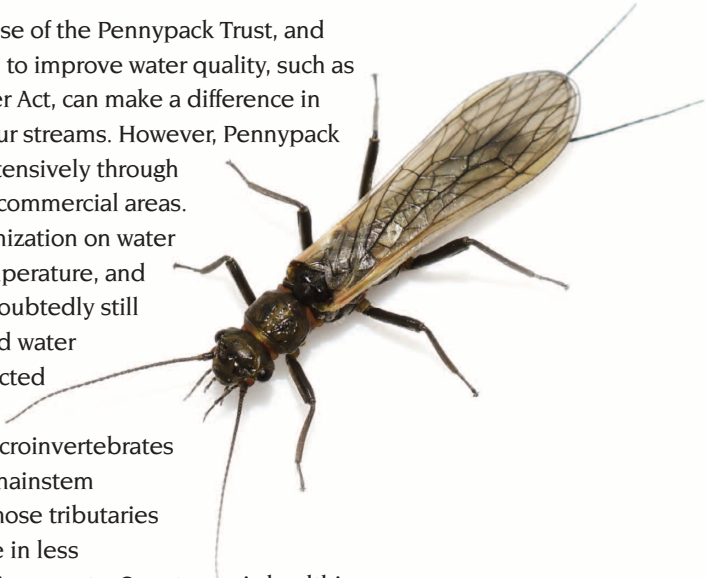


AS PART OF THE DELAWARE RIVER WATERSHED INITIATIVE'S STREAM KEEPER PROGRAM, PENNYPACK TRUST STAFF AND VOLUNTEERS HAVE BEEN MONITORING MACROINVERTEBRATES IN PENNYPACK CREEK SINCE 2016

To try to better understand the potential for macroinvertebrate diversity in the Pennypack watershed, Maria Paula Mugnani, Research and Restoration Coordinator at the Pennypack Trust, organized a survey of two important feeder streams to Pennypack Creek. Mitchell Run is a tributary arising in an adjacent wooded area, and Cairn Run drains a low-density portion of Bryn Athyn Borough. With the help of our macroinvertebrate expert, Nick Macelko, we identified at least 3 species of mayfly nymph and at least 7 species of caddis, including species which are more pollution sensitive than those found in the mainstem. In addition, we found at least 2 species of stonefly nymphs. Stonefly nymphs, which are not observed in the mainstem, are typically very intolerant of pollution; their presence indicates much better water quality.

This most recent survey work indicates that these two feeder streams (which drain areas largely protected from development) may have significantly better water quality than the mainstem. Local

efforts, like those of the Pennypack Trust, and national efforts to improve water quality, such as the Clean Water Act, can make a difference in the health of our streams. However, Pennypack Creek flows extensively through suburban and commercial areas. Effects of urbanization on water flow, water temperature, and pollutants undoubtedly still lead to reduced water quality as reflected by the lower diversity of macroinvertebrates we see in the mainstem compared to those tributaries which originate in less urbanized environments. Our stream is healthier, but there is always room for improvement. 🌿





FINANCIAL REPORT

FISCAL YEAR ENDED JUNE 30, 2021

Revenues and Support

| | |
|--|---------------------|
| Membership and Annual Appeal | \$ 330,076 |
| Endowments | 354,619 |
| Unrestricted Contributions | 84,008 |
| Programs and Retail Sales (net) | 28,538 |
| Grants..... | 179,318 |
| Other | 27,345 |
| Total Revenues and Support..... | \$ 1,003,904 |

Expenditures

| | |
|---|-------------------|
| Ecological Restoration and Stewardship | \$ 457,312 |
| Membership Programming and Communications | 87,119 |
| Administration | 286,804 |
| Facilities | 163,642 |
| Total Expenditures | \$ 994,887 |

1,341 MEMBERS

This year we had the greatest number of members on record!

As a private, non-profit organization we rely on our membership to help preserve and restore the natural lands we are entrusted to steward. Support from our members enables us to provide habitat for animals, build buffers for stormwater runoff to keep creeks clean, establish strong reforestation for cleaner air, and maintain beautiful spaces in which to discover the wonders of nature.

(Active members July 1, 2020 – June 30, 2021)

Preservationist

(\$5,000 & Over)

Brent and Kelly Asplundh
Elizabeth Ann Asplundh
Gregg and Christine Asplundh
Kurt and Jennifer Asplundh
Dick and Sally Brickman
Lach and Dorothy Brown
Chris and Julie Carr
Andrew Christy and Nicole Tomlinson
Louise D'Alessandro & Richard Hamilton
Eloise Hyndman
Stefan and Donna Keller
Patricia S. Scott
Timothy and Robin Trautmann

Conservationist

(\$2,500 – \$4,999)

Mark and Lynda Arrimour
Susan Asplundh
Eileen R. Glenn
J. Michael and Lydia Kennedy
Kathlene White Nissenbaum
Gail Faulkner and John S. Oyler
Beatrice Pitcairn
Duncan and Martha Pitcairn
Stephen and Susan Rade
Vickie Rosskam
Dan Schmucker
Bill & Libby Weißenmayer
Carol S. and Robert B. White, Jr.

Steward

(\$1,000 – \$2,499)

Ellen Asplundh
Eric and Kelly Asplundh
Marilyn P. Asplundh
Martha Asplundh
Mimi Asplundh
Ned and Neva Asplundh
Steven and Lisa Asplundh
Stewart and Jackie Asplundh
Richard D. and Lowell Booth
Melissa Bowyer
Scott and Diane Brown
Bryn Athyn Marksmen's Assoc., Inc.
Carr & Duff, Inc.
Andrew and Christine Duffy
Christopher Cleary
Louis and Jennifer Davis III

Shirley Davis
Ronald Dunbar
Downs Foundation
Lynn P. Genzlinger
George and Gretchen Graham Jr.
Richard and Linda Hostelley
Steve & Clara Huntzinger
Andrew and Alexis Isztwan
Dirk and Judy Jungé
George and Barbara Karr
Tracy Russo and Mitch Kelly
Scott and Eleanor Kelley*
John and Bernadette Klohoker
Paul and Muriel Lange
Alan Lindy & Carolyn Hirsh Lindy
Jenny and Jody Maddock
John Medveckis
Chris and Rebecca Mendel
William and Mindy Mikulik
Greg and Susan Odhner
Mark & Janice Pennink
Robert and Karen Peterman
Clark and Peggy Pitcairn
Feodor Pitcairn
Nancy R. Posel
Robert and Anne Riethmiller
Walter and Linda Ritter
Seth C. Sands
Kenneth and Glynn Schauder
Gail and Christopher Simons
Lewis S. Somers and Christine L. Sweeney
Diana VanBuren
Robert and Eleanor Weirman

Benefactor

(\$500 – \$999)

Randy P. Abrams
Leigh and Carol Altadonna
Aubrey Maks and Adrian Ashwah*
John and Kristin Bair
Marie Baker
Hank Ballerstedt
Mary Anne and Ray Battaglia
Carol Beam
Leslie Boff
Harris and Fran Brown
Christie and Rick Bruce
Amy Buick
Brian and Eileen Carroll
Christopher and Jane Carter

Eric Clausen
David Cooper
Josh Cooper
Anne and Robert Cunningham
Andrew and Louise Damm
Peter and Kathryn Davis
Amanda Detweiler
Jeffrey and Sarah Elsing
Kathleen and Max Ernst
Evans Heat Treating Co.
John Redmond and Mary R. Faris
Dolores Grady
Pamela Grady
Ken and Emily Graupner
David & Joanne Harrar
Carol and Bruce Henderson
Susan J. and Gilbert P. High Jr.
Dean and Nita Holmes
Richard and Gail Holmes
David M. and Barbara Junkin
Kean and Kris Pitcairn
Kate Harper and Paul Kelly
Maria Kiernan
Tamra Goodrow and David Kistner
Charles Kremp
John & Ulla Kukora
Kelly and Scott Kupper
Gordon and Kathy Leister
Bruce Levy
Robert and Patricia Lima
Brendan and Erin Mannix
Ronald K. and Catherine McQueen
Frank and Sandy Mendel
Robert Mooney*
John and Janet Moyer
Andrew G. and Madeleine C. Nehlig
Linda and Bruce Nicholson
Danielle Page
Jeff and Mary Paul
Meeta and Devendra Peer
Eshowe Pennink
Dan and Tricia Pinciotti, Jr.
Terry & Jeanne Quinn
Clair and Jeanne Raubenstine
William and Heather Reynolds
David B. Rowland
Paul and Theresa Rutherford
Roger and Janeen Sacks
Clayton Daniel Schmucker
Laura & Eugene Schriver III

Natalie Rocchino and John Slade
Lois and Richard Stern
Jim and Katie Sullivan
Trout Unlimited Chapter #468 of
Chris and Tina VanBuren
Peter and Kelly VanBuren
Arlene Voellm
Will and Nikki Weihenmayer
Bob and Barbara Weiss
Cheryl and Kent Wille
Seth and Robyn Zlotkin

Patron

(\$300 – \$499)

Richard and Linda Anstotz
Abhishek Aphale
Paul and Amy Baker
Thomas Barnes
Cyane Gresham and
Alan Bayersdorfer
Cathey and Dave Belli
Suzanne Bernhardt and
Robin Childs
Lynn and David Betz
Russell Bishop, Jr. &
Virginia Hamilton
Judy Bishop
Cory & Pauline Boyce
Tyler Boyce
Tim and Kym Brock*
Brooke and Jake Brown
Fredrik and Hilary Bryntesson
Mary and John Buchatsky
Ashley & Issac Burgos*
Marvin and Wendy Clymer
Glenn & Leigh Coffin
Arthur M. Cohn
Timothy and Molly Costigan
Jonathan Crook
Ann Lovitt and Andrew Czulewicz
Chet and Denny Derr
David Doerr*
Marc DiNardo and
Elizabeth Drum
John P. & Barbara J. Duggan
Jennings F Durand
Paul and Helen Ference
Sandra Fischer
Fitzpatrick Funeral Home
Fred and Linda Fogel
William and Alexis Fonner
Robert and Carol Fox
Edward Ginley
Frederic B. Gustafson
David and Stacey Harp
Suzanne Hock
Gregory and Amy Holman
Paul and Sandra Hope
Glenn and Sandra Hostetter
John and Alice Houriet
William and Judy Howland

Adam Johnson*
Drew and Mara Johnson*
Edward Kavanagh
Judith Langsfeld
Kathy and Joe Lawler
Kenneth and Song Lee
Edwin Leiby
Stephen and Elizabeth Leonard
Peter Jay & Kaye J. Lermite
Cornee and
Rebecca van der Linden
Constance M. &
Edward F. Mack, Jr.
Dean Malissa
Norman S. Marcus
Janet P. Marini
Reuben Mergen
Edie Miller
Stephen Morley
Moyer and Son, Inc.
Susan M. Moyer
Robert and Kathleen Murray
Nourishing Storm
Wellness Company
Ruth Obrecht
Sandra Odhner
Sevket and Michele Okumus
David and Megan Oyler
Mary and Howard Panitch
Julie Perry
John and Bethany Peterman
Shirley Pitcairn
Eugene Potapov
Cathie Driscoll and Joe Ragg
Bruce and Meryl Randazzo
Arpitha Reddy and
Pradeep Bankulla
Margie Repka-Peters
Eric and Kelsey Riethmiller
Amy and Mitch Russell
Frank Keaney and Phyllis Sabol
Arthur E. Scena
Buddy and Debbie Schmidt
Edward Schuman
Kevin A. Scott
Steve and Lynn Seeholzer
Sean and Kim Seese
Michael and Lauren Shepard
Deenie and Gary Silow
Warren L. & Sally E. Simpson
Martin Slamon*
Grant and Kimberley Smith
Morgan and Patricia Smith
Robert Smith*
Dan and Nancy Sneberger
Katrina Sokolosky
Meemie Sullivan and
Allen Steere
John and Lucy Strackhouse
Andrew and Shada Sullivan
Mark Sundy*

Peter J. Gkonos and
Marie Ann Tavianini
Gregory F. Tryon
Jody Twer
Meryle and David Twersky
Bob and Margaret Wallis*
Robert and Maryann Watson
Lauren Weihenmayer
Jennifer Weinstein
Sydney and Michele Weinstein
Ned Wolff and
Nancy J. Weissman
Joan and Jonathan Wilt
Fred and Kristin Woll
Constantine and Maria Woznyj
Alissa Wykes and Karen Ericsson
Jeremy Zar

Neighbor

(\$100 – \$299)

Isaac and Sarabeth Abir
Robert and Sally Adams
Joseph Alber
Donald and Claire Alderfer
Dottie and Andrew Allison
Mark and Dara Andraka
Edward and Gloria Andree
Gretchen and Tim Archibald
Susan and Bruce T. Arnold
Oneida Arosarena*
Bryon & Lindsay Arrimour
Gwen and Edward Asplundh
Harry and Joan Baist
Ruth & Kenneth Barber Jr.
Benjamin Bargerhuff
Steven and Pamela Barrer
John Basinski
Jean S. Bauer
Paul W. Beach, Jr.
Craig and Patty Beaman
Bob and Michele Begley
John Bell*
David Bennis
George Benz*
Beverly & Scott Levis
Graham and Robin Bier
Gardeners of Crooked Billet
David Binder*
Barry and Rochelle Blank
Phyllis Blavier*
Steven Bloomer
Amy Bock*
Josef and Elizabeth Bock
Joseph and Elizabeth Bodri
Ron and Diane Bohr
Edward and Janet Bondi
Caira Bongers
Betty Bott
Christopher & Kristin Bowyer
Brett and Gail Bragin
Brenda & Paul Branson

Christopher H. Brennan
Jonathan Brock
Christine and Kevin Broderick
Kenneth A. Brown
Joseph and Kathleen Bruton
Norman & Donna Buchanan
Jennifer Buckley
Thomas Buckley
Timothy A. Burris
David Humphreys/Linda Cairnes
Francis and Mary Calter
Dan Daniel Capecchi*
Elaine Carr*
Jodi Carr
Tyler Case*
Jim & Ilka Cassidy
Nicole and
Daniel Castrogiovanni
Bill Causer
Cathy and Kevin Cawley
Charles and Nancy Cerino
Juanita Maria Cirilo*
Steve and Mary Cissne
Julie Clawson*
Margaret Louise Clooney*
Susan and Sam Clover
Dorothy Cohen
Edward Louis Cole
James and Carolyn Cole
Patrick and Laura Collier
Keith Collins
David Comalli*
John and Marge Connell
John C Connell*
Teresa and Tom Connell
Bob Connelley*
Jack and Inge Connelly
Patricia and Paul Conroy
Deborah and Richard Cook
Kent and Lisa Hyatt Cooper
Robin & Cheryl Cooper
Connie and Andrew Corrigan
Michael Corrigan
Monica and Gerard Costello
Bradley and Andrea Cranch
Conrad M. and Patricia Cregan
Robert and June Crippen
Barbara Cristaldi
Jonathan Crossette*
Nina Loeb Cullen*
Jean and Dennis Cunningham
Marjorie Curtis-Cohen*
Jon and Donna Cushing
Connie and Michael Czaplicki
Chris Dartley
Scott and Chara Daum
Carolyn and Jonathan de Jonge
Mary Jeanette and Elliot Dee
Joyce Deibert
Thomas and Karen Deiley
Thomas DeKornfeld

Doris and Jack DeLong
 Deborah DePorter
 Robert DeSilverio
 Karen Deutermann
 Regina & Douglas Diamond
 Sharon J. Dicker
 Lynne Dillett
 Michelle Dipaolo*
 Paul and Susan Driver
 Robert Thomas and Nancy
 Adams Drye
 Pam Dull*
 George and Sharon Eastburn
 Anna Eberman
 Joe Ebert
 Karen Eble-Dickter
 Brian Michael Eichorn
 Bob Eisele
 Robin Eisman
 Susan Elliott
 Dorothy Erb
 Debra Evonishon
 Lynda L. Ewald
 The Roat Family
 Russell and Agnes Farne
 Michael and Lisa Fazio
 Joy and Phillip Feerrar
 Bob Hutchison and
 Lizbeth Feldstein
 Mary Felley
 Mary Findlay
 Debora and Jay Fineman
 Michael F. Fink
 James Finke
 Elizabeth Finn*
 Gary and Joanna Fisher
 Donald C. Fitzpatrick, Jr.
 Joyce Fleming
 Elizabeth Florea
 Edward Forstein
 Sharon Forsyth*
 Doreen L. Foust
 Joseph and Sandy Franks
 Dave & Kim Frazier
 Sam and Marcey Friedman
 Joan M. Frizlen
 Elizabeth Froom
 Stanley and Kathleen Fudala
 James Garbutt
 Marsha Gates
 George Zotalis and Niki Bili*
 Harry and Jane George
 Eleanor Given
 Deborah Glanzberg-Krainin
 Ed and Ruth Goebel
 Patricia Goerlich*
 Michelle Goldberg
 Stephen Gozdan
 Lorraine Grassi
 John Grier
 Margaret Grookett

Alan and Mary Grubb
 Les Grycewicz
 Catherine Guenzel
 Ann Marie and Robert Gugger
 Ed and Kirsten Gyllenhaal
 Marilyn C. Hagy
 William and Nancy Hamilton III
 Sam and Mary Lou Hardman
 David and Diane Harp
 Kiri and Maury Harris
 Darryl and Emily Hasen*
 Kirk and Diana Hasen
 Hatboro Chiropractic Center
 Ruth Hausen
 Elizabeth Hayes
 Marie Hegarty
 Beth Henderson
 Bob Hibschan
 Edward and Marie Higgins
 Gilbert P. High, III*
 Linda Hill*
 Lois Hill
 Denise Hoeksema
 Homer P. Hoffman
 William Hofmann*
 Lisa Hogan*
 Joe Horanzy and
 Mary Ellen Condrew
 Leslie and Brian Horigan
 Jerome and Dolores Horowitz
 Karen and Charles Houck
 Elvina and Michael Houghton
 Benjamin and Karen Hoyle
 David and Dawn Hunter
 Siri Hurst
 Duane & Liza Hyatt
 Carol A. Ingald
 Eugene Szymkowiak and
 Erin Irish
 Steve and Margit Irwin
 Henry and Barbara Jacquelin
 Ann James
 Amy Jones
 Barbara G. Jones
 Kim and Molly Jungé
 John Kasbar
 Megan and Brett Keaton
 Kevin and Barbara Kelly
 Michael & Susan Kelly
 Karen and David Kent
 Debra Kessler
 Robert W. Kilgore
 Jane Kirchhoffer
 Danna Kistner
 Janet S. Klein
 Arthur and Debra Klotz
 John and Susan Knauss
 Lisa Knight
 Rich and Jill Knudsen

Jamie G. & Peter Koh
 Barbara and Max Koppel*
 Dave Blanton and Pamela Kops
 BettyJean Korson
 Timothy K Kotilainen*
 Jeffery and Denise Krenski
 Walter and Sharon Krenski
 David Fuller & Janet Krettek
 David Krutsch
 Joseph & Brenda Krzaczek
 Don and Rosemary Ladd
 Elizabeth Lakata
 Susan and Al LaManna
 Sandra and Robert Laurenzi
 Joann A. Lawler
 Keith and Barbara Lawrence
 Kristine Lehrman
 Marilyn and Stephen Leonard
 Janet M. Leung
 Louise Lisi
 Cynthia Little
 Chris and Cheryl Lockard
 Norman M. Loev
 Meryl Hyatt and Steve Long
 Kate and Dave Lorenzi
 Winifred Lutz
 Arthur and Elaine Magilner
 Scott Malinowski
 Robert Schaeffer &
 Nina Manojlovich
 Rick and Ceil Markham
 Stephen William Martin*
 Susan and Wayne Martin
 Cindy Matonis
 Robert and June Maxwell
 Kurt and Shawn Mayer
 Richard and
 Gwendolyn McAdams
 Deborah and Stephen McCarter
 Joann and Bernard McCullagh
 James and Jessica McCullough
 Brian C. McDaid*
 Colin Bern McDonnell*
 Lynn and
 Jim McIlvaine

Don and Jeanette McKeegan
 Cedric J. and Julianna McKeever
 Grace McMackin
 William A. McMahon Jr.
 Clay McQueen
 James McSweeney*
 James & Marian Mee
 Christopher and
 Jennifer Meissner
 Jessica Mento*
 Michael and Maria Mentzel
 Margaret Lees Jones Micenec*
 Sherri and Ted Mignatti
 Alexandria Yoder Miller
 Richard Milner
 Anna Mindel
 William and Joan Mitchell
 Carl Molt
 John and Joanne Monahan
 Ara Moomjian
 Erica Moor*
 Fred Moore
 Paul and Dorothy Morse
 Bill and Naomi D Murphy*
 Deirdre Murray
 Les and Jill Murray
 Vienna Murtha*
 Heather and Jon Musselman
 Douglas and Frances Nadel
 Dorothy Nagle
 James and Nancy Necker
 Gordon and Eileen Nelson
 Ronald and Marian Nelson
 Suzanne Nelson
 Donna Nicklous
 Joseph J. Nitterour
 Adrian Noble
 Jennica and Calebe Nobre
 Susan Nolan
 Kosrow and Marian Nowroozi

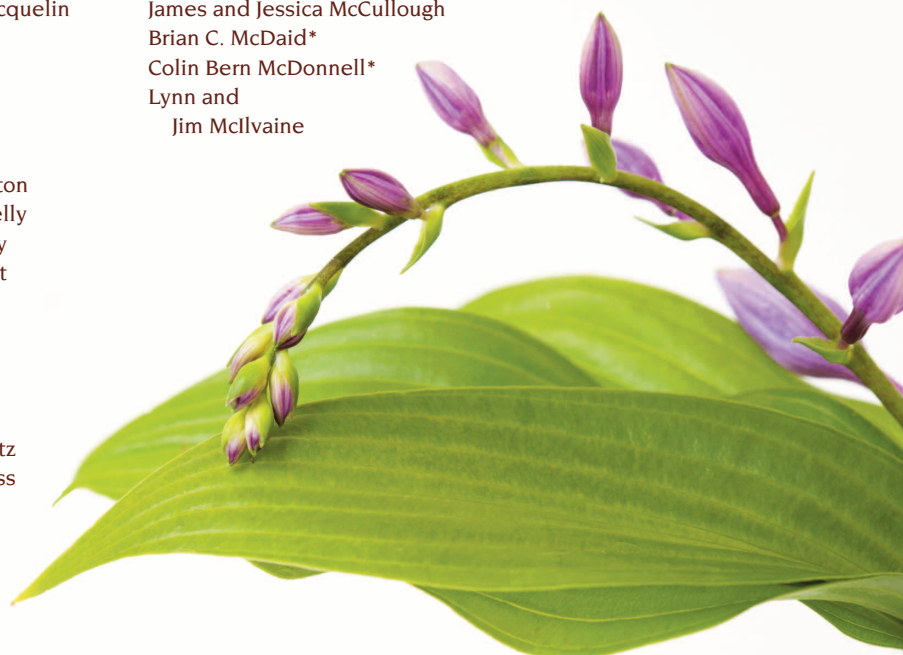




Photo by: **Peter Gkonos**

Francis and Joan Nulty
Kathy Glatthorn and
Edward Nunan
Marilyn & Jeffrey Nyman
Greta Odhner
Matthew & Mary Jane Odhner
Marci Olenk
Virginia and Ryan Overberger
Sherry Pace
Michael Pahl
Alex and Julie Panassow
Peter Panassow*
Robert and Deborah Panebianco
Ed and Peggy Parkinson
Dory Perkiss
Linda E. Pestrak
Peter and Kristin Hall*
Natalia Petrova
Bonnie and Thomas Pierie Jr.
Kathleen S. Pilla
Torrance Pitcairn
Craig and Karen Pizer
Michael A Podgorski*
Dorothy Poli
James W. Polis
Bennett Povolow*
Anne W. and H. David Prior
Jennifer & George Pronesti
Donna & Alex Prychodko
Thaddeus and
Michelle Przybylowski Jr.
Colleen Burns and
Paul Radzevich
Don and Wendi Rank
John Rateike
Diane and Lowell Reed
Allen and Carol Reeder
Nancy Resch
Daniel Reynolds
Gwendolyn D. Rhodes
Luke and India Rhodes

James Rigney*
Linda Ritter
Vincent and Bonnie Rivera
David and Mary Robertson
Fred and Susan Rodgers
Elizabeth Roland
Sofia and Frank Rosala
Janice Roscoe
Madalyn Rose
Nicholas and Leah Rose
David & Fay Rosenthal
Lillian Ross
William & Eileen Roth
James and Aldona Rubillo
Dominic & Jordann Rufo
Jeremy Rupczyk
Claire and Jeff Rutenbeck*
Catherine Salamone
Rodney and Tracey Sandmeyer
Bruce and Dale Sandstrom
Jack Sariego*
Kenneth C. Sarkis
Lynnette Saunders
Deborah A. Schafer
Doreen Fitzpatrick &
Fred Schwab
Philip and Joan Schwarz
Dominic F Scirrotto*
Martin Q. Selzer
Mark Smith and Cindy Shapiro
Jim Sharp
Lucy P Sharp
Peter and Gwenda Sheedy
Robert Sheesley
Eric and Starr Shiffer
Jacquie and Tom Sims*
Brian Paul and Colleen Sked
Stuart and Karen Skinner
Carter L Smith
David and Elizabeth Smith
Garrett and Leah Smith

Jim Smith, Jr
Ann & Donald Smullen
Sig and Judy Soneson
John Sorrentino, Ph.D./
Judith King, M.A.
Carolyn and Tom Spencer
Robert and Karen Spencer
Jackie Stampone
Janet Starwood
Alan Schiff and Judy Stavisky
Sally Stead
David B. & Margaret R. Stephens
Mark Stephens*
Harris W. W. Stern
Marlene Stocks
Michael Stokes
Erin and Mike Straub
Charlotte P. Stuempfig
Jim Sullivan
Kenneth A. Sumner Jr.
Tom and Lillian Sweeney
Harry Symons
Michelle Synnestvedt*
Paul and Nancy Szyszko
Susan and Robert W. Tafel, Jr.
Hal Taussig*
Roy Taylor
Deborah J. Teasdale
Richard Terry
Elliott Titcher, CPA
Bill Tober
Regina S. Litman and
Russell Tobias
William and Cathy Toffey
Mark Tonelli
Helena Tsourous
Sandra Miller and Bruno Tucci
Marion Burns Tuck
Donald E. Tuthill
Sam & Alice Valenza
Christopher VanCleaf

Michael Vassello
Lloyd Bobb and Susan Verona
Robert and Judith Vierick
Frank and Lisa Viola
Gregory Voigt
Bill Vollmerding
Anna Wagner*
David and Elissa Waldstein
Richard Waterman and
Lisa Holderman
Randal L. Whitman
Thomas and Jeanne Wieckowski
Melissa and Maxwell Wilkes
Neil and Lori Williams
Joyse H. Wobensmith
Vincent M. Wonsiewski
Rick & Donna Woywod
David W. & Kristin H. Wynn
Kenneth and Alaine York
Ann Bodnar and Derek Zecher
Nancy Zieber
Anthony and Christina Zimba

Family (\$50 – \$99)

William Adams
Scott and Cynthia Ahern
Jason Albert
Gregory W. Allen*
Sam and Gail Alu
Joseph and Linda Auchinleck
Charles Baker
Maureen J. Ballard*
George and Theresa Baltz
Elaine Barrett
Rick and Melanie Bartlett
Denise L. Bauer
Anne Beerley
Michele Benham*
Helen Berkenstock
The Bernhard Family*

Susan B. Betts*
 Elizabeth Billings
 Wade and Anne Marie Birchfield
 Jane and Maxwell Blair
 Jenny Blair
 Joseph Blinebury
 Bob and Claudia McGill
 Rosaline M. Boehm*
 Luciana Bonavolent*
 Braden Bostock
 Michele & Gregory Bovasso
 Nancy J. Bower
 Elaine and Dennis Braig
 Rachel and Jerry Brandt
 Dan and Linda Braun
 Timothy L. & Roberta Braxton
 Jim and Mary Breslin
 B. J. Bronstein
 David and Alisa Brooks
 Kate & Patrick Brosnan
 Lisa and Vince Brown
 Joshua Bruce
 Leslie J. Bruno*
 Steven and Shaun Bunting
 Zachary Burd*
 Dave Burnshaw*
 Heather Burton & Tammie Youngen
 Michael and Wendinne Buss
 Shaun and Brenda Buss
 Willard Byrd
 Gail Caddy
 Milton R. Cannan
 Martin David Carey*
 Jenny and David Childs
 Walter and Elizabeth Childs
 Michael and Laurie Clabbers
 Jeffrey and Margot Clark
 Irene Clemens*
 Michael Cohen
 Rory Cohen*
 Susan L. Cohen
 Daniel Conly*
 Michelle Cooney*
 Gerald and Eileen Corkery
 John and Kit Cotton
 David and Elizabeth Cribb
 Casey Dascher
 Rachel and Richard Davies
 Mark and Shirley Davis
 Theresa Deckebach*
 Nancy Deibert
 Paul and Elizabeth deLuca
 Scott Sherman and Ruth Deming
 Ethan Dennis*
 Nina and Niles Dewees
 John DiMarzio
 Beth Schuler DiMedio*
 Andrew and Janet DiPiero, Jr.
 Charles and Marianne Direso
 Dale and Sonia Doering
 Lisa Donahue*

Kathy Dougherty
 Deirdre Dowdakin
 Jeffrey Dowds
 Dr. and Mrs. Murrell Dobbins
 Michael Drake*
 Amanda Duchossois*
 John Duesler
 Christine Duffy
 Kathleen Dunleavy
 John and Judith Dwyer
 James Dyen
 Tess Eichenberger
 Alan and Linda Eickhoff
 Paul and Mary Lynn Ellis
 Thomas and Nancy Enama
 George A. Englesson
 William Erat
 MaryAnn Erdosy
 Dee Montie and Murray Evans
 Cakky and Rob Evans
 Vincent and Barbara Ferrara
 Paul S. Ferrer
 Kylie & Jamie Fife-Miller*
 Gloria Finkel
 Elizabeth Fisch*
 Natalie Forbes
 Judith and Ken Foulke
 Devin Fouracre
 Melissa Franke*
 Thomas R. Frederiksen
 Rita and Philip Freiler
 Lynn and Warren Friedel
 Margaret and Burt Friesen
 Jaquiline and Mark Furry
 Kathleen Galvin
 Michael & Elizabeth Garofalo
 David and Michele Geiger
 David Gest
 Jean and Tom Gibbs
 Stephanie Gill*
 Stephen and Rose Giordano
 James Girgenti
 Joel M. Glassman, M.D.
 Donnette and Garth Glenn
 Gary Gloeckler
 Andrew and Gretchen Glover
 John Glow
 Margaret Gockley
 Richard and Cathlin Goerwitz
 Jon Pappas and Arlene Goldbach
 Shannon Good
 Rob, Jen, Ella and Molly Gould
 Kathryn Gradwell*
 Lisa and Barry Gratz
 Sue and Chuck Greco
 Heather & Stewart Greenleaf, Jr.
 Carmen and Arlene Gregorio
 Gretchen and Philip Haertsch
 Daniel C. Griffin*
 Annabel and Harald Grote
 Monica and Keith Gruber

BOARD OF DIRECTORS

OFFICERS

Gilbert P. High, Jr.
President

Christopher C. Carr
Vice President

Louis "Tripp" Davis III
Vice President

Gregory Odhner
Immediate Past President

David Rowland
Secretary

Paul A. Rutherford
Treasurer

MEMBERS

Leigh Altadonna
Gregg Asplundh
Amy Baker
Dr. Fredrik Bryntesson
Amy Buick
Louise D'Alessandro
Kathleen Ernst
Kyle Genzlinger
Alexis Dillett Isztwan
Clay McQueen
David Oylar
John Peterman
Clair Raubenstine
Robert Riethmiller
Kim Seese
Kenneth Schauder
Sam Valenza

STAFF

Chris Dartley
Lead Horticulturalist

Connor Fahey
Stewardship Staff

Kirk Laule
Stewardship Staff

Sam Makler
Horticulturalist

Chris Mendel
Executive Director

Maria Paula Mugnani
*Research and
 Restoration Coordinator*

Sarah Pellecchia
Entomologist & Stewardship Staff

Kevin Roth
Education and Outreach Specialist

Ryan Staiber
Crew Chief

Lara Thrapp
*Membership and
 Communications Coordinator*

Tiffany Young
Controller

Jim Hager*
 Richard and Lois Hamilton
 Samantha & Benjamin Hamlett*
 Jennifer K. Hartigan
 Al and Patricia Hatton
 Grenville Hayes*
 Elena Hays
 Fred and Hilma Helbig
 Gregson K. Helledy
 Carl Hemenway
 Cliff and Nancy Hence
 Jahnna and Scott Henderson
 Rebecca Henon*
 Wanda Herman
 Amy Hersz*
 Daniel Heyman*
 Amanda High and Family
 David and Lori High
 Rev. Kirby Lawrence Hill and
 Nancy Lawrence Hill
 Mark Hillman*
 Barbara and Bernie Hogan
 Tom & Sherry Holland
 Brian Howland
 Gary R. Hudes
 Michael and Janet Hughes
 Kelli Hunter*
 Irene Hurford*
 Garry and Judy Hyatt

David Jordan
 Rubesh Jose*
 Edward R. Joshua III
 Joseph Querns and Patricia Jud
 Kevin I. and Jessica Jud
 John and Anna Mae Jungers
 Indra Kalasauskas
 Natalie Karas and Drew Alden
 Larissa Kebuz
 Sara Keefe
 Dan & Heidi Keifer
 Daniel Kelly*
 Donna and Gerald Kelly
 Tom and Lisa Kenny
 F. Joseph Kiefner
 David & Suzy Kieserman
 John Klak
 Alan and Elaine Klawans
 David Kleiner
 Liz and Rich Kleinert
 Linda Kline
 Joyce and Peter Klugherz
 Joseph and Yvette Kornfield
 Robert Kradoska
 Kurt Kroszner*
 Deborah Krupp*
 Suzy and Alan Laidlaw
 Jim Landers
 Margo Langlotz
 Alison & Ottar Larsen
 Bjornar and Erin Larsen
 Linde Lauff

Katrina Looby
 The Lord's New Church
 Anne Lotz
 Patrick Loughney*
 Darin Lovett
 George and Michele Lutzow
 Edward and Bozhena Maciocha
 Joseph Maddock
 Lin and Dawn Magaha
 John and Mary Magee
 Paul Maher*
 Karen Bond and Eric Maier
 Ted Makris*
 Bette Male
 Francis Mann
 Mary Markushewski
 Heather Martin*
 Daniel P. Martz
 John Massucci
 Noreen McAneny
 Daniel and Kathleen McCafferty
 David and Diane McCarty
 Janet McCullough
 Bonnie McDevitt
 Janet McElwee
 John and Gayle McGill
 Susan and Thomas McGrath
 Jennifer McLaren*
 Arthur McManus, Jr.
 Robert & Tracy Meehl
 Michelle Meeks*
 Jo-An Melish*
 Phillip & Margaret Mergen
 Ann and George Merkel
 Daniel and Jennifer Metroka
 Victoria Mikus
 Cynthia Milburn
 Greg and Judy Miller
 Susan and Brian Milnes
 Val Minett*
 Karen A. Moore*
 Kristine Moore*
 Lisa Moore
 Denis Mora and Sharon
 Dean and Robin Morey
 Edward and Karen Moses
 Elsie Mueller
 James Mullowney
 Patrick Murray
 Mihran Richard Nalbandian
 Dianna Synnestvedt and
 Amy Navarro
 Teresa & Jeffrey Navon
 Kent Nelson
 Jeannette and Jan Noorman
 Marylee and Allen Nosheny
 Mariann O'Connor
 Patricia O'Connor
 Grant and Sarah Odhner
 Michael X. and
 Susan Kahn Odhner

Emil and Janet Oetinger
 Margaret and Bill Oetinger
 Jason Ojeda
 John and Melissa Olson*
 Robert Otto*
 Richard and Susie Pace
 Gail Parker
 Joan and Mike Parry
 Lois Pasco
 Lynn Patterson
 Thomas and Sue Patton
 Kathleen and Rick Pearce
 Kirk and Carolyn Pendleton
 Gene Pfeffer IV
 Barry Pflueger
 Julie Piotrowicz
 Walter and Eileen Platek
 Christine Plush
 Bruce Polekoff
 Lisa Poli
 Deborah K. and Stuart D. Poppel
 Dawn Powell*
 David and Nan Powlison
 Christina Preis
 Ruth M. Quinn
 Charles Radcliffe
 Alice Reich
 Marketta T. Reich*
 Theresa M Reilly*
 Francis and Pamela Reinprecht
 Cynthia Rettig
 Greg and Carol Rhodes
 Peter and Roxanne Rhodes
 Margie Richards
 Raymond & Anne Rife
 Robert and Celine O'Brien
 Efrem and Ronni Robinson
 Jim and Diane Rockenbach
 Meg and Eric Rohtla
 Sandy & Joseph Rooney
 Donna Rosenbaum*
 Dean Rosencranz
 Jim Rosengarten*
 Robert E. Rosenwein
 Donald Ross*
 Alexandra & Kevin Roth*
 Kevin Howard Roth*
 Bob and Monica Rotzal
 William Saccone
 Amy and Jerry Salem
 Debbie and Edward Salomon
 Paula Scelsi
 Tom Schied
 Judith Schiffer
 Sherna Schloss
 Hank and Marie Schneider
 Scott and Cyndi Schneider
 Judy Schramm
 Madeline Schroth
 Christine Schuyler
 Eve Schwartz*

Jim and Robin Ingalls
 Edward and Terri Jackson
 George Jacob*
 Beverly Jacoby
 Marie Tucker and
 Joseph Jacquelin
 Linda & Jeff Jennings
 Jessica Jensen*
 Linda Johnson-Barth
 Cindy Ferguson and Norm Jones

Joan and Dennis Lebofsky
 Lawrence and Joan LeConey
 Charles Riess and Melody Lesser
 Sharon Levin
 Dolores Liebel
 Joan Liehe and Elayne Aion
 Charles and Fay Lindrooth
 Ellen and Michael Liss
 William E. Loeb
 Barbara Lommer



Peter and Marilyn Schwartz
Sharon J. Seidman*
Arthur and Andra Seidner
Linda and Raymond Sekula
Janet Seydel
Ian and Jeanne Sharp
Mark and Marie Sheedy
Owen Sherman
Jennifer A Sherwood*
Daniel H Shmilovich*
Paul Simonetti
Raymond and Lynda Skaddan
Mary Ann and Gerry Smith
Phil and Faith Smith*
Adam and Heather Soloff
Melissa Spedaliere*
Joe Rozak and Jane Spencer
Jack and Marcia Stecki
Maurice and Renee Sterling
Rita Stevens
Mike Stretton*
Russell Strollo
Shawn Sullivan
Marianne and Randall Sutin
William Sweeney
Ronald and Hildegund Tempest
Paul and Barbara Tercha
Jeff Thalheimer
Richard M. Thomas
Hal J. Thompson*
Marian Tibbetts*
Julia Tiernan*
Mark Tino*
Barbel and William Tinsman
Mary Lou Toewe
Paul and Molly Tsourous
Richard Utrych
Linda Vanfossen
Nick and Lisa Vidnovic
Matthew Vnenchak
Craig Hill Wakefield*
Carolyn and Douglas Walking
Linda Wall
Megan and Patrick Walsh
Michael and Nancy Walsh
Ingre Walters
Gary and Paula Warnalis
Tom Watanabe*
Linda Weaver
Gina Weckel*
William Weiland
Tod and Keara Weinstein*
Kathy and Tom Weir
Betty and Morris Weiss
Linda M. Weller*
Eric Weren
Karen Westmoreland
Ralph and Gloria Wetzel
Joseph Weldon & Noel Wight
Nancy Parker and Peter Wilder
Mauricio and Tamar Wilk*

Robert Wisniewski
Leigh A. Wojciechowicz
Kurt and Debby Wood
Nancy S. Woodrow
Jane Xenia Harris Woodside*
Theresa Yeager*
Mario Young and
Melissa Norman
Nick & Pat Zahn
Fan Zhang-Plasket
John Joseph Zygmunt Jr.

Individual (\$35)

Linda Acker
Miriam Adler
Joan Aichele
Mark and Kay Alden
Alexandra Altamuro*
Richard Andrews
Travis Andrews*
Travis Austin Andrews
Susan Angermeier
Jorge L. Angles*
Jesse Appel*
Karen Appel*
Yury Arkadin*
Harold Ashton
Ruth Ashton*
Myrta Asplundh
Saul Axelrod
Alan Baksi
Cecilia Ballasy
Thomas Barrett
Michael C. Barylak
Dorothy Bash
Brian Bell*
Elissa Berardi
Mary Berkowitz*
Mary C. Betz
Brian Blair
Ineke Bonner
Curt Broad
June & Erland J. Brock
Steve Brown
Andrea Brunhofer
Barry Bryan
Arthur Bucci*
Jean Burch
Diane P. Burke*
Cathy Canty
Brian Carpenter
Pamela Carunchio
Harry M. Clegg
Joan B. Clover*
Avrum Cohen
Dan Connell
Patrick Cooney
James D. Costello
Alice Coyle
David Craig

Janet A. Crawford*
Lynne Cummings
David Cusson
Edward Davisson*
Clifford DeCato
Gail Devlin
Nina Diaconescu
Barbara DiPaolo
Bernard P. Dowling
Melinda Doyle
Christine C. Dudlik
Amelia Duffy-Tumasz*
Curt Dunn*
Ruth Dunn
Stephen Edmondson
Linda Eichman
B. D. Elwell
Lily Eppinger
Eugenie Esser
Grace Fanning*
Andrew Fisher
Lillian Fleming
Sally Frazee
Bonnie Frazier
Thomas Fritz
Bruce Fuller
Melanie J. Gavin
Janet Geissler*
Grady Gervino
Sarah Ghantous*
Joseph Gillespie
Margaret Y. Gladish
Caroline Glenn
Rachel Glenn
Vera P. Glenn
Joyce Goldberg
Mitchel R. Goldman
Byron L. Goldstein*
Jan Goltz*
Betty J. Good
Julie H Gouveia*
Robert Green
Barbara Griffin
Linda M. Storz Grutzmacher
Patricia Gwaltney
Lorraine Haggerty
Frank Hammond
Joe Hanson
Dot Harbison
Sally Hardy
Ingrid Hartley
Christopher Hauck
Kate Heron
Lenny Herrin*
Shannon P. Herrmann
Trudy Herrocks*
Judy and Gary Hoffman
James Hollis
Vira Homick
Catherine V. Howard
Dwayne Howard

Justin K. Hyatt
Gloria Inlander
Lynn Jackson*
Eda Jacoby
Kenneth W. Johnson
Matthew F. Johnson
Timothy Judge
Marc Kalman
Bernice Keebler
Margaret A. Kelly
William Kilby
Eugene J. King Jr.
Csaba Kiraly
Terri Kirk
Jennifer Kline
Brett Klopp
Walter H. Knapp
Donald Knauss
Barbara and Stephen Knox
Kevin Kohler
Michael G. Kopcho
Lowell Krawitz
Mark Kukawski
Robert Kuntz
David Kutish
Silvia Laemmle*
David Lamb
Lisa A. Larks*
David M. Lauer
Bruce Leaycraft
Marc Lee
Graham J. Lermite*
Michael Levin*
Mary Lodise
Carol Ludolph
Frank Luzzo
Gerard Madigan
Joseph Mahalik*
Carole Maher
Edward Maher
Ellen C. Mahon
Joanne Majeski*
Francis Manero
Douglas Marshall
Agnes Masny
Gillian S. Mayer
Brandon McCracken*
Maureen McCullough
Martha C. McDonough
Alex McGivern
James McKay
Bill McKeegan
Michael McKeough
Dick McKinny
Steven McMullin
Robin Mcnemar*
Anne R. Meibohm
Ernie Melcher
Jason Paul Mirandi*
Richard J Mitchell*
John Mlodzinski

Casey Molt
 Erik Molt
 Lettice H. Moon
 Page S. Morahan
 Elizabeth Mosley
 Malcolm Mosley*
 Martha Mott-Gale
 Melissa Mulvey
 William B. Murphy Jr.
 David Nash
 Carol Nemeroff
 Edward & Melissa Nolan
 Diana Osborne*
 Barbara A. Pape
 Ruth Pfeffer
 Nancy Pickwell
 Honoria Piree
 Kristy Pucci
 Terry Quinn
 Christine Randazzo
 D. Wesley Rapp
 John D. Rawlings
 Elizabeth Reed*
 Ingrid Reinert
 Norm Rickert
 Heather Robb

Deena Rochvarg
 Lincoln Roden III
 Donna Rohner
 Elizabeth Rooney*
 Amy Roos
 Angela Rose
 Warren Rosen
 Thomas Rotchford
 Harry Rothwell
 Tina Ruckh*
 Bob Rumer
 Aileen Ryan*
 Brenda Rydstrom*
 Howard Samit
 Connie Schandein
 Joe Schilling
 Carl Schmitt
 Claudia Schmitt
 William Appell Schmitt*
 Jane Schmitz
 Donald Schreiber
 Curtis Schwartz
 Eileen Senour
 Andi M. Sibley
 Janet D. Simons
 Dorothy Smith

Adam Smolanowicz
 Henry Solis
 Cathy Stahl*
 Jill P. Stange
 Iliana Stavans*
 Mae Steere
 Elliott B. Stein
 Joe Stevens
 Hedy Straus*
 Thomas Sykes
 Connie W. Tarlini
 Roslyn Taylor
 Olga Tchuvatkina
 Lara Thrapp*
 Andrew James Tolen*
 Charles R. Tolton
 Alan F. Trachtenberg
 David Trent
 Alice Turman
 Charles Twining*
 Marjorie Uhrich
 Lambros Vafiadis
 Deborah Vallette
 Logan Vaughan*
 Lori Voltmer
 Dr. Noble Wagner

Roman Ware
 Gerry Watts
 Carol Wengert
 Mary E. Whelan
 Dermott White
 Vivian R. Worthington
 James Wynn II
 Alina Yakubova
 Deanna Yerka
 Giselle Zayon
 Sonja Zecher
 John H. Zimmer 🌿

*Members who joined the Trust from July 1, 2020 – June 30, 2021

We hope that this is a complete list of our members during our 2021 Fiscal Year, and apologize for any inaccuracies or omissions which may have occurred during compilation.



Photo by: **David Lamb** | 2020 Photo Contest Winner



Photo by: **Lisa Moore** | 2020 Photo Contest Winner

BUSINESS, FOUNDATION, CIVIC AND GOVERNMENT SUPPORTERS

Corporate Partners

Aqua Pennsylvania
PECO Energy Company
Woodmount Co., LLC

Business Partners

Campbell Soup Company
Carr & Duff, Inc.
Evans Heat Treating Co.
Fitzpatrick Funeral Home
FP Woll & Company
The Fredericks Company
Hatboro Chiropractic Center
L. D. Davis Industries, Inc.
Moyer and Son, Inc.
Nourishing Storm Wellness Co.
Octoraro Native Plant Nursery, Inc
Timoney Knox, LLP

Foundation Partners

Ally Financial Inc.
The Asplundh Foundation
The Benevity Community Impact Fund
BLBB Charitable
Faulkner Family Foundation
Johnson & Johnson
The Merck Foundation
National Fish & Wildlife Foundation
National Philanthropic Trust
Norman J. and Doris Fisher Foundation
The Philadelphia Foundation
William Penn Foundation

Civic Support

Bryn Athyn Marksmen's Assoc., Inc.
Gardeners of Crooked Billet
Germantown Acad. Envir. Action
The Lord's New Church
Pennsylvania Horticultural Society
Philadelphia Trail Club
Trout Unlimited Chapter #468 of Southern
Montgomery County

Government Support

Borough of Bryn Athyn
Montgomery County Conservation District
Pennsylvania Department of Conservation
and Natural Resources

In Kind

Birding with Ruth
Blue Diamond Expert Window Cleaning
Bryn Athyn College
Crooked Eye Brewery
Fulmor Heights Home Owners Association
Huntingdon Valley Country Club
Upper Moreland School District
Wetlands and Ecology, Inc.

Special Donations (\$100+)

Anonymous 1
Anonymous 2
Gregg & Cammy Asplundh
Kurt and Jennifer Asplundh
Dick and Sally Brickman
Chris & Julie Carr
Andrew and Louise Damm
Louis and Jennifer Davis III
Thomas DeKornfeld
Dave and Kim Frazier
Margaret Anne Ganister
Kyle & Aurelle Genzlinger
Eleanor Given
Linda Hill
Dirk and Judy Jungé
Clark and Peggy Pitcairn
Walter & Linda Ritter
Diana VanBuren
Margaret & Bob Wallis 🍁

ANNUAL FUND DONORS

(\$25 and Over)

Isaac and Sarabeth Abir
Robert and Sally Adams
William Adams
Joan Aichele
Joseph Alber
Les and Elizabeth Alden
Leigh and Carol Altadonna
Mark and Dara Andraka
Richard Andrews
Richard and Linda Anstotz
Cheyanne Asplundh
Eric and Kelly Asplundh
Stewart and Jackie Asplundh
Mary Anne and Ray Battaglia
Cyane Gresham and Alan Bayersdorfer
Carol Beam
Lynn and David Betz
Jenny Blair
Richard D. and Lowell Booth
Brett and Gail Bragin
Lisa and Vince Brown
Barry Bryan
Thomas Buckley
David Humphreys/Linda Cairnes
Francis and Mary Calter
Milton R. Cannan
Carr & Duff, Inc.
Jodi Carr
Charles and Nancy Cerino
Jenny and David Childs
Stephen Christian
Jeffrey and Margot Clark
Susan and Sam Clover
Marvin and Wendy Clymer
Arthur M. Cohn
Keith Collins
Patricia and Paul Conroy
Bradley and Andrea Cranch
Conrad M. and Patricia Cregan
Jonathan Crook
Jean and Dennis Cunningham
Jon and Donna Cushing
Ann Lovitt and Andrew Czulewicz
Andrew and Louise Damm
Louis and Jennifer Davis III
Shirley Davis
Carolyn and Jonathan de Jonge
Lisa Delgado
Doris and Jack DeLong
Scott Sherman and Ruth Deming
Robert DeSilverio
Regina & Douglas Diamond
Vincent DiGirolamo
John DiMarzio
Barbara DiPaolo
Julianne Domm

Christine C. Dudlik
John Duesler
Andrew and Christine Duffy
Linda Eichman
Kathleen and Max Ernst
Paul and Helen Ference
Vincent and Barbara Ferrara
Paul S. Ferrer
Mary Findlay
Michael F. Fink
James Finke
Gary and Joanna Fisher
Edward Forstein
Doreen L. Foust
Robert and Carol Fox
Stephen and Rose Giordano
Donnette and Garth Glenn
Dolores Grady
Pamela Grady
Ken and Emily Graupner
Annabel and Harald Grote
Linda M. Storz Grutzmacher
Richard and Lois Hamilton
Sam and Mary Lou Hardman
David and Diane Harp
Elizabeth Hayes
Elena Hays
Carol and Bruce Henderson
Susan J. and Gilbert P. High Jr.
Lois Hill
William Hofmann
Richard and Gail Holmes
Catherine V. Howard
Brian Howland
Benjamin and Karen Hoyle
Carol A. Ingald
Gloria Inlander
Edward R. Joshua III
Joseph Querns and Patricia Jud
Marc Kalman
Bernice Keebler
Kate Harper and Paul Kelly
F. Joseph Kiefner
Jane Kirchhoffer
Tamra Goodrow and David Kistner
Liz and Rich Kleinert
John and Bernadette Klohoker
Jamie G. & Peter Koh
Michael G. Kopcho
Dave Blanton and Pamela Kops
Kelly and Scott Kupper
David Kutish
Bjornar and Erin Larsen
Marilyn and Stephen Leonard
Corney and Rebecca van der Linden
Cynthia Little

Winifred Lutz
Scott Malinowski
Cindy Matonis
David and Diane McCarty
Janet McElwee
Cedric J. and Julianna McKeever
Dick McKinny
William A. McMahon Jr.
Christopher and Jennifer Meissner
William and Mindy Mikulik
Victoria Mikus
Edie Miller
Greg and Judy Miller
Richard Milner
Edward and Karen Moses
John and Janet Moyer
William B. Murphy Jr.
Deborah Myers
Dorothy Nagle
Mihran Richard Nalbandian
Ronald and Marian Nelson
Mariann O'Connor
Kevin O'Leary
Octoraro Native Plant Nursery, Inc
Greg and Susan Odhner
Thomas and Sue Patton
Natalia Petrova
Barry Pflueger
Beatrice Pitcairn
Dorothy Poli
Clair and Jeanne Raubenstine
John D. Rawlings
Margie Richards
Renee Riethmiller
Linda Ritter
David and Mary Robertson
Thomas and Theresa Rohrbaugh
Sandy & Joseph Rooney
David & Fay Rosenthal
Robert E. Rosenwein
Lillian Ross
Vickie Rosskam
Harry Rothwell
David B. Rowland
Paul and Theresa Rutherford
Roger and Janeen Sacks
Rodney and Tracey Sandmeyer
Maureen Schaeffer
Deborah A. Schafer
Buddy and Debbie Schmidt
Carl Schmitt
Philip and Joan Schwarz
Anne Searls
Mark Smith and Cindy Shapiro
Mark and Marie Sheedy
Paul Simonetti

Brian Paul and Colleen Sked
Garrett and Leah Smith
Grant and Kimberley Smith
Mary Ann and Gerry Smith
Meemie Sullivan and Allen Steere
David B. & Margaret R. Stephens
Connie W. Tarlini
Peter J. Gkonos and Marie Ann Tavianini
Deborah J. Teasdale
Jeffrey Tober
William and Cathy Toffey
Gregory F. Tryon
Marion Burns Tuck
Edward and Anne Wagner
Bill & Libby Weihenmayer
Carol S. and Robert B. White, Jr.

Thomas and Jeanne Wieckowski
Leigh A. Wojciechowicz
Constantine and Maria Woznyj
Kenneth and Alaine York 🍀



MEMORIAL GIFTS

We offer our condolences to all the donors who have lost a loved one or friend and who have chosen to honor their memory with a donation to Pennypack so that their legacy and what they loved will endure. These gifts were received between July 1, 2020 and June 30, 2021

In Memory of Barbara Acton

Mimi Asplundh
Dale and Sonia Doering
William E. Donnelly
Hyland R. Johns
Mark Steinberger and Ann Lebowitz
Bill & Libby Weihenmayer

In Memory of John Acton

Victoria Beasley

In Memory of Stephen Boff

Chris DeAngelis

In Memory of William Colbridge

Kurt and Shawn Mayer

In Memory of Carolyn Hein and James Soulges

Anonymous

In Memory of Paul Joseph Kelly

Mark Walf

In Memory of Bobby Leiby

Morgan and Patricia Smith

In Memory of Dody Magaziner

Ellen Jo Magaziner Masterson
Dan Magaziner
Elizabeth Magaziner Smith

In Memory of Feo Pitcairn

Susan Asplundh
Richard D. and Lowell Booth
Frank and Kathryn Bricker
Huntingdon Place Social Committee
Beth Hirshenhorn
Alessa Giampaolo Keener
Kurt and Shawn Mayer
Kent and Marion Smith
Bill & Libby Weihenmayer

In Memory of Nancy Rems

Anonymous
Drew Clauhs
Joseph Stadulis
Robert Widin

In Memory of Mary Sacchetti

Kurt and Shawn Mayer

In Memory of Margaret Sullivan

Fray Crease
Doreen L. Foust
Howard K Irving
Joanna Steere and Aaron J. Mackey
Nicholas Mason
Phyllis and Richard Taylor

In Memory of Alice Sharp

Michael and Lisa Fazio

In Memory of Allie Woodland

Michael and Lisa Fazio 🍀



Preserving and Restoring Land for
Future Generations

2955 Edge Hill Road
Huntingdon Valley, PA 19006-5099
Tel: 215.657.0830
Fax: 215.657.1679
www.pennypacktrust.org

Non-Profit Org.
U.S. Postage
PAID
Permit No. 98
Southampton, PA 18966

THE MISSION OF THE TRUST

and its membership is to
protect, restore, and preserve the lands of the
Pennypack Creek Valley so that they:

Remain forever an enhancement to the quality
of life in our community,

Support forever a natural landscape populated
by native plant and animal life, and

Become a standard of excellence for innovative
restoration and stewardship practices to be shared
with other individuals and organizations joined in
a common commitment to the environment.

